



HARDY



MADE IN LIVERPOOL

HARDY



HARDY UK LIMITED | MADE IN LIVERPOOL

PASSION. PRIDE. PRECISION.

Since 1854, our company has remained at the forefront of evolving technology in blade design and manufacture for the global leather industry. The legacy of this pursuit is the quality inherent in our comprehensive range of blades for leather shaving, fleshing and splitting.

Today, our factory is moments from the historic docks of Liverpool, UK. A city defined by its warmth, resilience and a proud manufacturing history, this location also allows us to effectively manage our exports, which account for 95% of our sales. Customers across the world know that Hardy blades mean consistent quality, precision and durability, something they want to be able to promise to their customers too. With Hardy, they know they can: our blades, made using only the best certified high grade steel, are designed to get the very highest quality and yield in production of leather, as efficiently as possible.

In 2015, Hardy was acquired by renowned Sheffield knifemakers, Arkote. With a vision to ensure that we continue to lead the way, this ownership is consolidating a reputation garnered over more than a century, and driving our evolution, with a focus on technology and innovation. There are plenty of ways to describe the company we are today - committed, passionate, enduring and expert - but we are happy to let precision be what we're best known for. It's been that way for more than 160 years, and we never intend to let that change.

CUSTOMERS ACROSS THE
WORLD KNOW THAT HARDY
BLADES MEAN CONSISTENT
**QUALITY, PRECISION AND
DURABILITY.**



OUR WAY, FOR OVER 160 YEARS

We're proud of our work and the class-leading quality it yields. Our promise to do and be the best we can runs through our company and everything we do - it's the Hardy way.

WE USE THE BEST RAW MATERIALS

Our products are only ever going to be as good as the materials they're made from. We won't compromise our hard work with anything less than the best high grade certified steel. developed over many years with our partners and expert metallurgists enabling us to produce a blade with excellent tensile strength, edge retention and resistance to wear and abrasion.

WE OWN THE PROCESS, START TO FINISH

Products and their processing never leave our site - they are designed, made, tested and inspected right here in our Liverpool factory, and marked with a unique stamo, so they're fully traceable right back to the raw material. From beginning to end it's our own rigorous standards that ensure we're happy to put our name to every blade that leaves.

OUR PROMISE TO DO AND
BE THE BEST WE CAN RUNS
THROUGH OUR COMPANY
AND EVERYTHING WE DO -
IT'S THE HARDY WAY.

WE'RE 'PEOPLE' PEOPLE

We apply the same high standards that define our products, to our services and customer support. From handling enquiries to servicing long-standing contracts, relationships matter to us. We work in partnership with customers to understand their real needs and to deliver the most efficient, effective solution, offering technical guides and on-site support to ensure that our solution works.

WE'RE PERFECTIONISTS - IT'S THE ONLY WAY WE KNOW

We understand that even the finest of details matter, something reflected in our inspection and testing processes, in our service and customer care and in everyday work practices. Hardy today owes everything to our attention to detail - you don't get to be 160 years old without obsessing.

WE'RE READY, ALWAYS

We service a global market, managing both a complex export operation and working with partners overseas to ensure locally available stock where appropriate. Everything is packaged to ensure it arrives in the same pristine condition it left in, as quickly and seamlessly as possible.

WE CAN HAVE AN ORDER PLACED,
PACKAGED AND SHIPPED FROM
NEARBY LIVERPOOL DOCKS THE
SAME DAY.

WE'LL NEVER REST

It's only by constantly reviewing how we can improve our processes and products that we've endured this long. Technology is always evolving, so we can never rest and our investment in research and innovation is core to our business.

OUR PRIDE IS YOUR PROMISE

We do all of this because you want to assure to your customers that they are getting the best. Our pride in our work means you can trust Hardy to deliver, so you can make your promises with confidence.





1:



2:

Fig 1: The Liverpool factory
Fig 2: Management team (from left)
Rob Andrews, Commercial Director
Peter Oxspring, Managing Director
Jeffrey G. Bassett, Chairman
Fig 3: High standards
Fig 4: Liverpool docks



3:

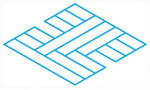


4:



...
A
R
D
Y

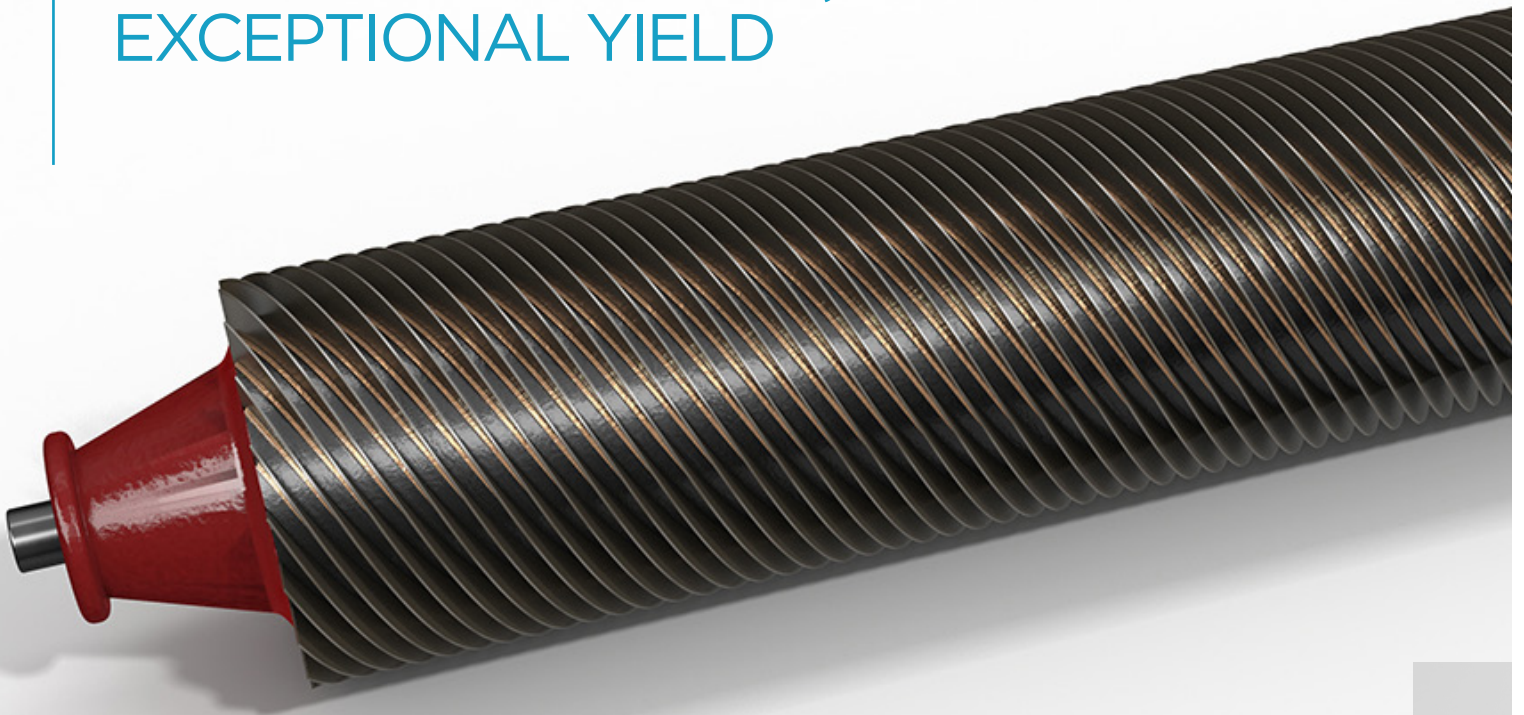
□
□
□



OUR PRODUCTS

SHAVING BLADES

ENDURING PRECISION, EXCEPTIONAL YIELD



EXAMPLE OF FULL CYLINDER WITH LEFT HAND AND
RIGHT HAND BLADE SET, MEETING IN THE MIDDLE



Our precision-made shaving blades consistently provide the highest quality raw material yield-to-blade ratio. As well as excellent performance, customers testify that they are easy to install and remove, giving them high quality shaving to the finest of finishes. That's exactly why we design them the way we do.

USE

Available as standard in 2.1mm and 2.5mm thickness, these blades will work for all your wet and dry leather shaving. We make blades for every brand of shaving machine, usually available from our extensive stock, which can be quickly and easily dispatched.

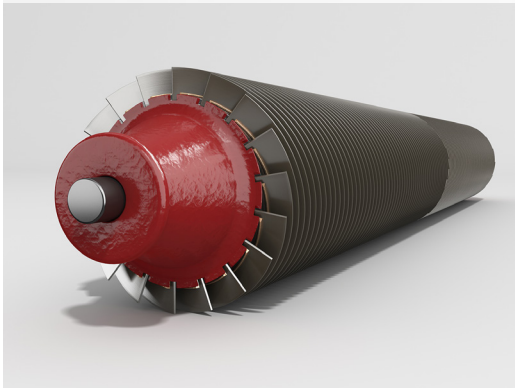
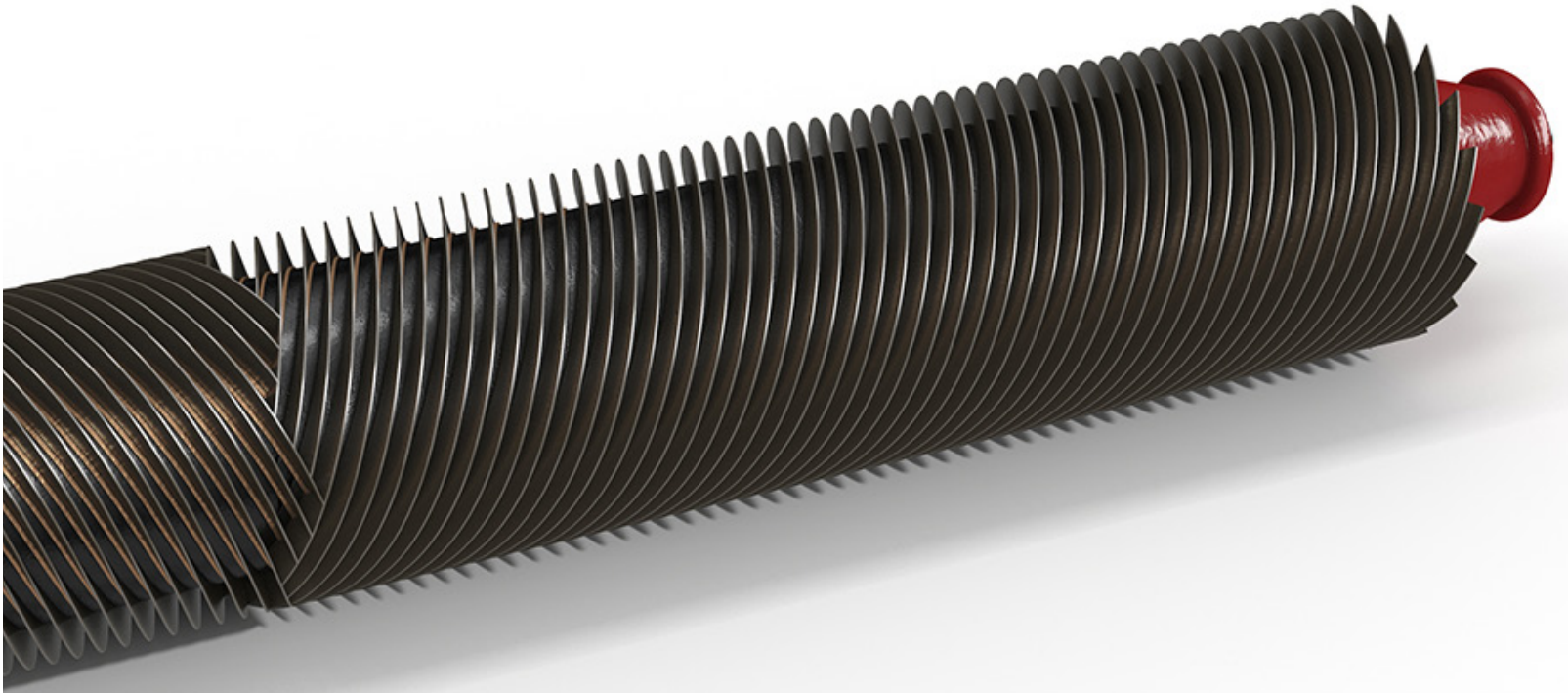
UNIQUE DESIGN FEATURES

When re-blading, the closely controlled geometry and 'soft bottom' flexibility ensures blades fit precisely into the cylinder groove without inducing unnecessary stress, often a feature of lower cost products.



HARDY UK LIMITED

MADE IN LIVERPOOL



We understand the perfect overall thickness and finish of your leather has an impact on downstream costs such as chemical processing and finishing time. The Hardy helical-shaped shaving blades consistently provide the best shave for your leather, giving you the best yield for an absolute low cost.

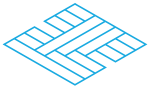
EXCEPTIONAL QUALITY AS STANDARD

- Hardy shaving blades are manufactured to exacting standards and quality control measures, including continuous in-process inspection.
- We use the highest quality raw material to optimise durability, toughness and hardness for specific applications.
- Our precision engineered blades mean enduring quality in repeatable geometry using PLC controlled production processes.
- All batches are uniquely stamped and fully traceable, from steel mill to shipment.
- Global exports are robustly packaged to protect the integrity of our blades.
- Many products are available from local partners, saving you time and cost.
- Ex-stock is available on a wide range of products.
- Outstanding customer care throughout, from enquiry to after-sales.



Wahlheim
BACK / DOS
L. Ostl & Söhne
HARDY
PART DE TRÁS / DETRAS / DORSO /
RUCKSEITE





OUR PRODUCTS

FLESHING BLADES TOUGH, DURABLE AND PRECISE



Our precision-engineered fleshing blades are built to endure, making the same consistently high quality cuts, from first use to last. Designed to work on all machine designs, we keep a comprehensive range in stock for fast, efficient dispatch across the world.

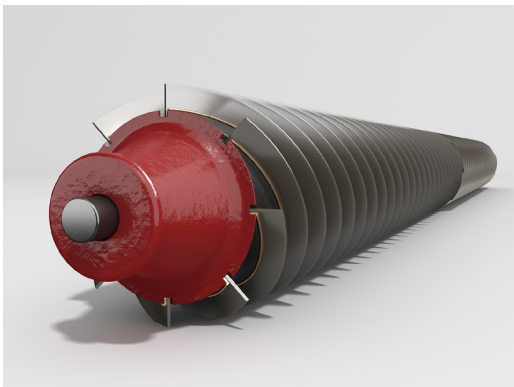
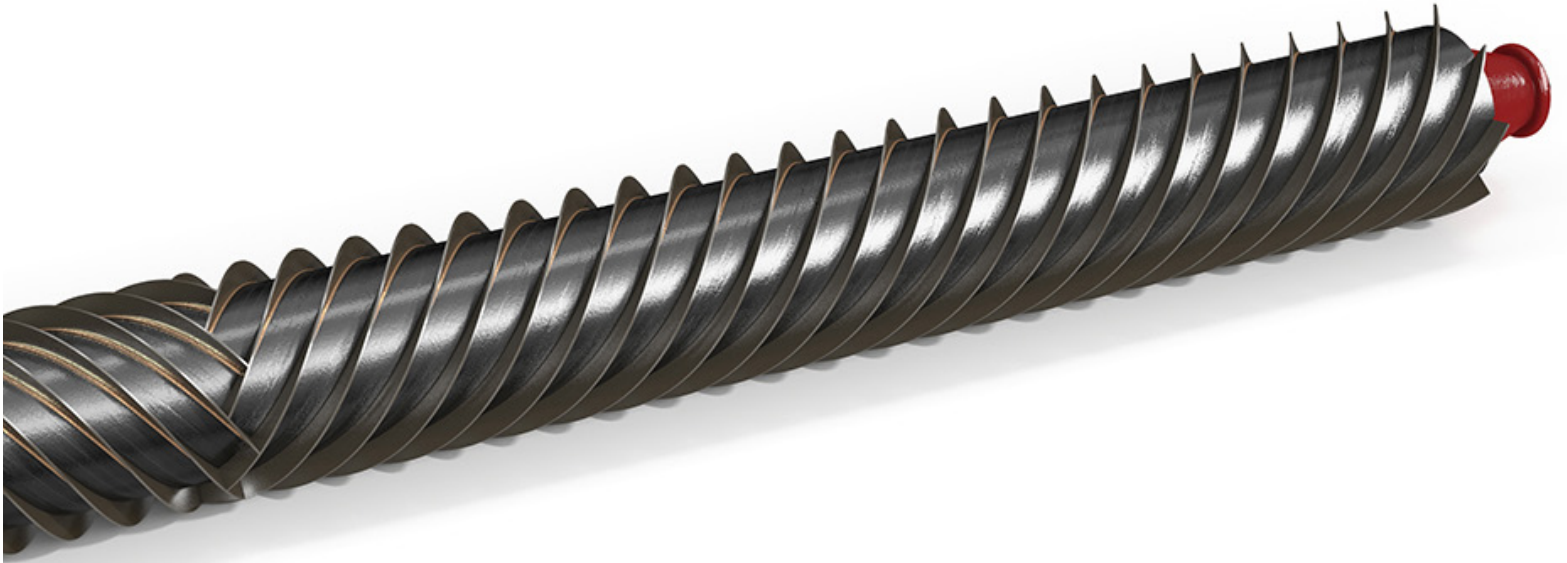
USE

Designed for use on a full range of fleshing machines, we provide the most comprehensive range of fleshing blades in thicknesses of 2.5mm, 3.2mm and 4mm.

UNIQUE DESIGN FEATURES

Our fleshing blades are made using the highest quality certified high grade carbon steel, and fully tempered to maximise durability and minimise customer costs and down-time.

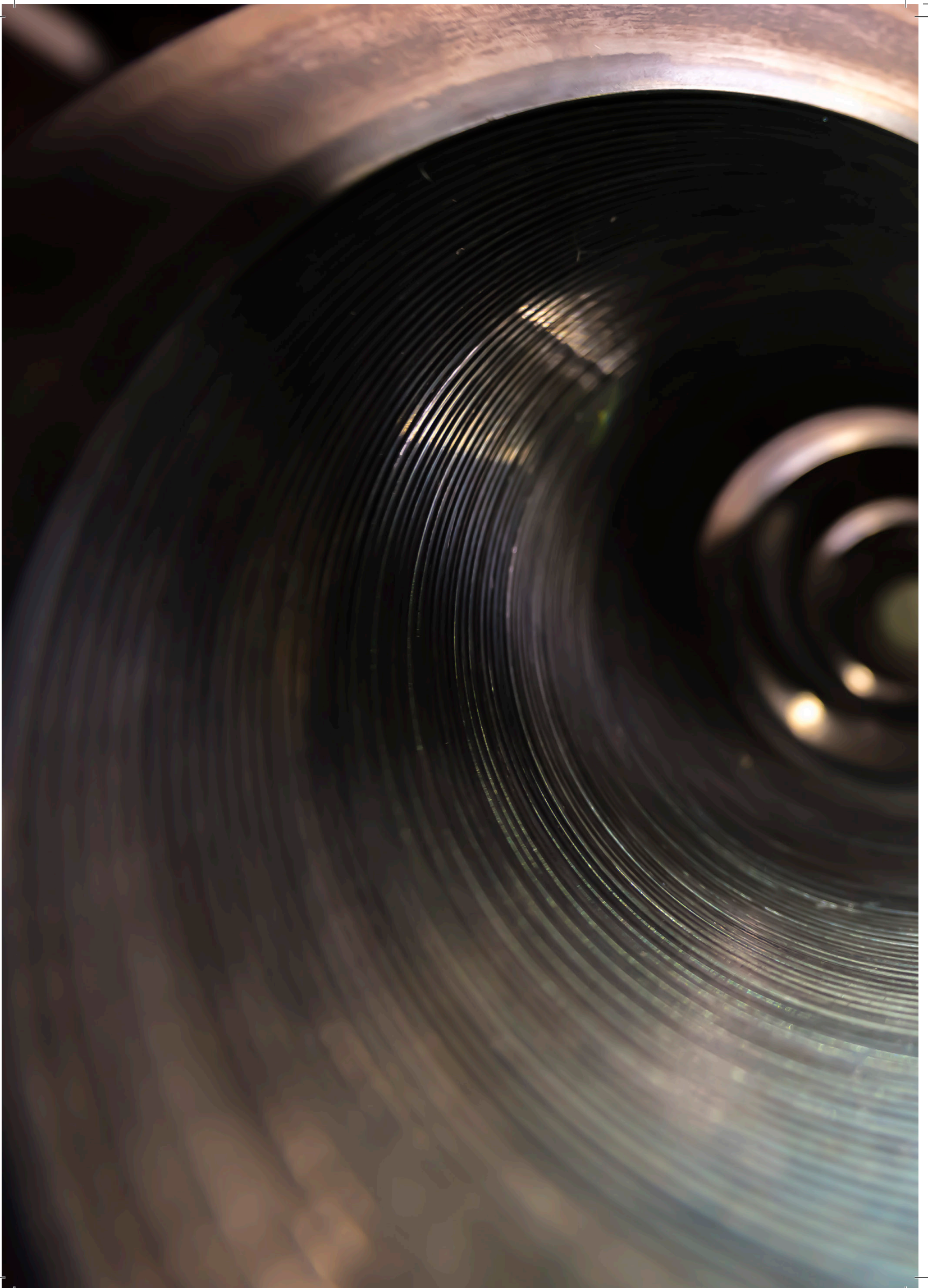


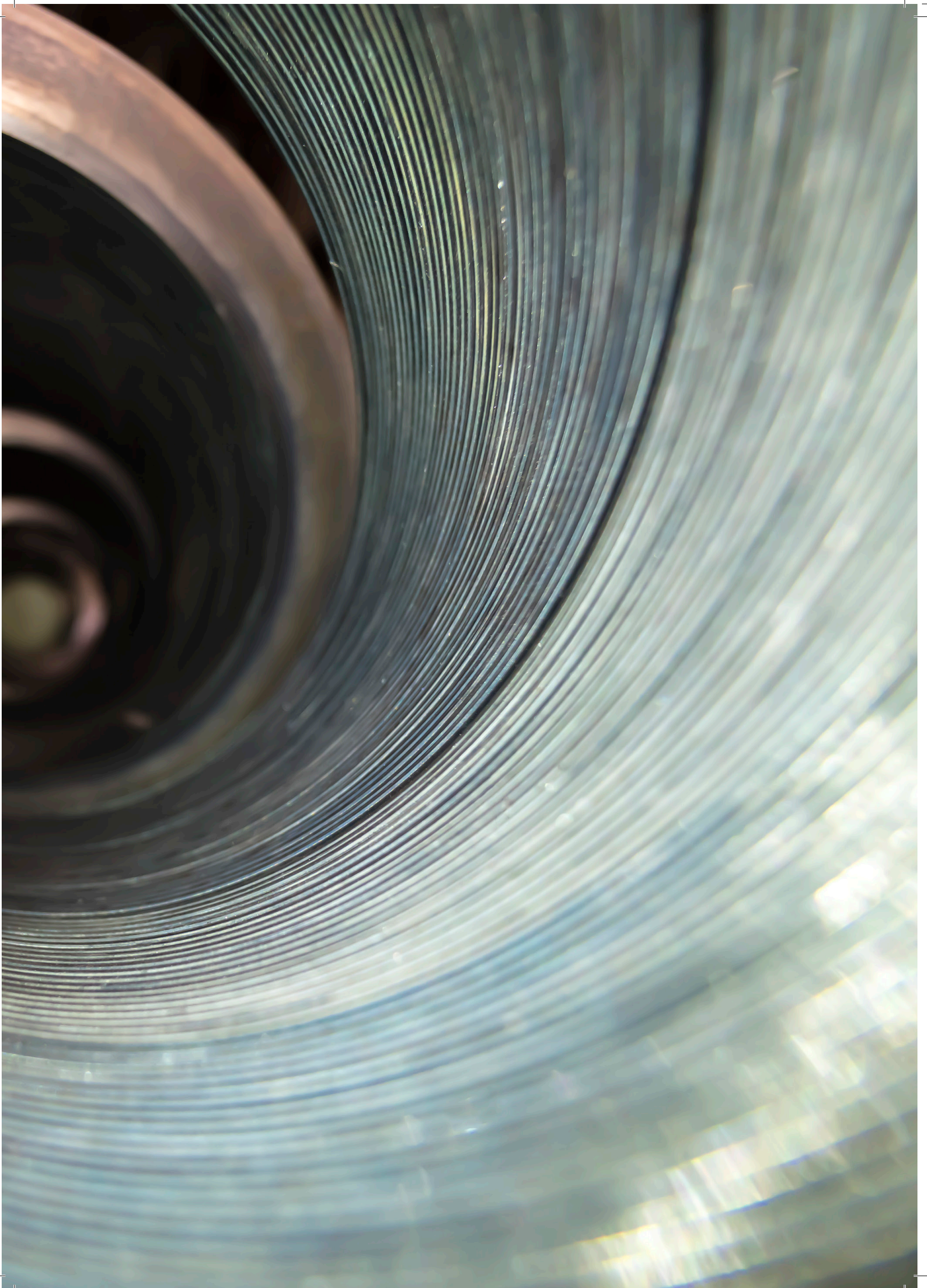


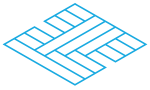
We design each blade for ease of installation and operation, again saving time and costs. Through constant improvements in both materials and processes we continue to produce world leading fleshing blades giving our customers the quality and performance they need every time.

EXCEPTIONAL QUALITY AS STANDARD

- Hardy fleshing blades are manufactured to exacting standards and quality control measures.
- We use the highest quality raw material to optimise durability, toughness and hardness for specific applications.
- Our precision engineered blades mean enduring quality in repeatable geometry using PLC controlled production processes.
- All batches are uniquely stamped and fully traceable, from steel mill to shipment.
- Global exports are robustly packaged to protect the integrity of our blades.
- Our blades are designed to make installation simple.
- Many products are available from local partners, saving you time and cost.
- Ex-stock is available on a wide range of products.
- Outstanding customer care throughout, including after-sales.







OUR PRODUCTS

SPLITTING KNIVES

CONSISTENT CUTTING EDGE, ENDURING PRECISION

We make splitting knives designed to produce a consistently high quality of split through the full usable hide width, reducing costly and time-consuming downstream processes. Hardy blades are also designed to create a uniformly outstanding result, helping to eliminate variable quality.

USE

Manufactured in 1.2mm standard thickness, our splitting knives are designed to fit a comprehensive range of machines, which have been used around the world for many decades. We have a selection of sizes available, or blades can be produced to your own requirements, delivered fully ground and ready to go.

UNIQUE DESIGN FEATURES

Our splitting knives are designed to yield as much as possible, minimising wastage and cutting the full hide width. Each knife is supplied precision butt welded and edge dressed to reduce installation time.

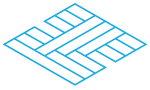


EXCEPTIONAL QUALITY AS STANDARD

- Hardy splitting knives are manufactured to exacting standards and quality control measures
- We use the highest quality raw material to optimise durability, toughness and hardness.
- Our precision engineered blades mean enduring quality over time and cuts.
- Choose from our full range or request a custom size.
- All batches are uniquely stamped and fully traceable, from steel mill to shipment.
- Global exports are robustly packaged to protect the integrity of our blades.
- Many products are available from local partners, saving you time and cost
- Ex-stock is available on a wide range of products.
- Outstanding customer care throughout, including after-sales.







OTHER PRODUCTS

ANCILLARY PRODUCTS COMPREHENSIVE RANGE, HIGH QUALITY

Hardy provides customers with the complete package when it comes to installing and optimising usage of our blades. We approve a range of high quality ancillary products and recommend them for use with our blades. We enjoy long-standing partnerships with these manufacturers, who design and make their tools with the same commitment to standards inherent in Hardy's blades.

GRINDING WHEELS AND BRICKS

- We stock a full range of recommended wheels and bricks for all machines.
- They're matched to the Hardy range of blades to optimise enduring performance and ensure the ongoing condition of the blades.

COPPER CAULKING

- Available in 25kg or 50kg rolls, in a variety of sizes and grades.
- Gives you complete control over the grade of copper used for caulking.

PNEUMATIC IMPACT WRENCH

- Set contains pneumatic impact wrench and accessories for de-blading and re-blading.
- Ensures correct and uniform pressure is applied during caulking.
- Significantly reduces the time to re-blade a cylinder.

CAULKING CHISEL SET

- This chisel set is designed for use where only manual caulking is available.
- Set contains all chisels needed to remove used blades, copper caulking and to re-blade.

FIELD SITE SCOPE

- Giving 15x magnification for accurate checking of the blade's cutting edge definition.
- Can also be used for a multitude of other tasks, such as checking fibre structure after shaving.



2:



4:



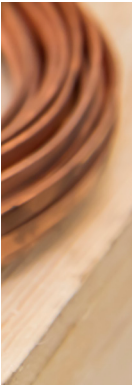


1:

Fig 1: Grinding wheels
 Fig 2: Copper caulking
 Fig 3: Field site scope in use
 Fig 4: Blades ready for shipping
 Fig 5: Field site scope



3:



5:

CUTTING EDGE
PRECISION BLADES
MADE IN LIVERPOOL



HARDY

MADE IN LIVERPOOL

**CONTACT
HARDY UK LIMITED**

t: +44 (0) 151 922 2291
e: sales@hardy.uk.com
f: +44 (0) 151 933 4164

175 Fernhill Road
Bootle, Liverpool
L20 9DU, UK

w: hardy.uk.com

Part of the Fi-Tech Inc. group